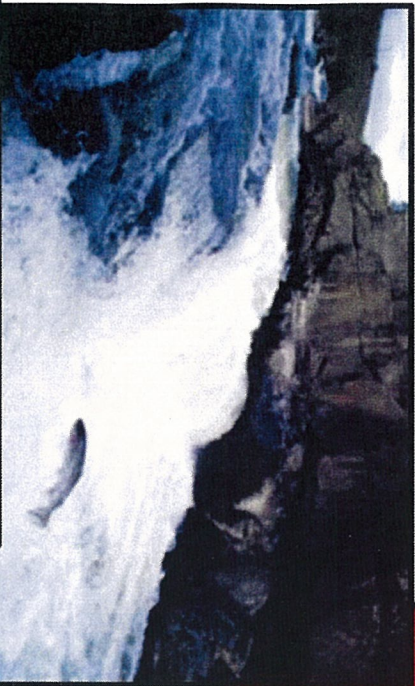


Luu-k'e xvmn-ni 'vt

(Salmon when it is growing)

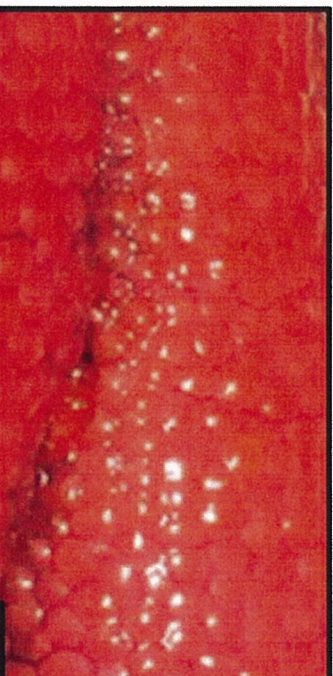
Once the spring salmon arrive at their home stream they lay their eggs.



Dan-dee-ni naa-ghit-li~'

(Spring Salmon we are)

Once it's spring again the salmon swim back upriver to their home stream.



Gvmp yan-li~'

(Salmon eggs they are)

Hat-dvn chd' tes-ya

(Then it goes again)



Luu-k'e yan-li~'

(Salmon they are)

The salmon eggs begin in the home stream. Then the salmon hatch.



Lhuk mvsh-xee-ye' yan-li~'

(Salmon fingerlings they are)

The fingerlings swim downriver to the ocean. They turn into adult salmon in the ocean.

